

LEGEND

- SET 3/4" REBAR
- POINT (UNLESS NOTED)
- UTILITY POLE
- TREELINE
- O-U- OVERHEAD UTILITY
- PERC HOLE
- ▲ DEEP PROBE
- 8'-6" BUILDING SETBACK LINE

"MONUMENTATION SET FOR THIS PLAN OF SUBDIVISION. ALL OTHER SET FOR PLAN OF SURVEY DATED 5/15/2013"

EASEMENT LEGEND

- PROPOSED VARIABLE WIDTH EASEMENT
- EXISTING ACCESS EASEMENT (UNION COUNTY RECORD BOOK 2398, PAGE 119)

GEISWITE LANE EASEMENT TABLE

Code	Bearing	Distance
GL-1	N 61°29'58"E	21.51'
GL-2	S 61°53'37"E	121.09'
GL-3	S 20°45'18"W	804.07'
GL-4	S 69°08'36"W	53.50'
GL-5	N 20°45'18"E	872.79'
GL-6	N 61°55'57"W	71.22'

BEARING TABLE

Code	Bearing	Distance
B-1	N 52°48'37"E	20.00'
B-2	S 20°43'07"E	69.01'
B-3	S 65°29'37"E	56.76'
B-4	S 8°33'59"E	150.49'
B-5	S 3°37'29"E	68.51'
B-6	S 3°37'29"E	85.26'
B-7	S 0°58'22"W	8.51'
B-8	S 84°14'12"W	19.63'
B-9	S 89°34'44"W	30.62'
B-10	N 5°02'07"W	53.27'
B-11	S 89°36'52"W	50.52'
B-12	N 7°47'33"W	20.79'
B-13	N 6°58'37"W	71.22'
B-14	S 16°18'39"E	137.71'
B-15	S 8°58'59"E	68.89'
B-16	S 8°33'59"E	153.32'
B-17	S 3°37'29"E	89.69'
B-18	S 16°18'39"E	63.75'
B-19	S 16°18'39"E	135.52'
B-20	S 8°58'59"E	85.00'
B-21	N 52°48'37"E	20.00'
B-22	S 82°08'28"W	20.01'
B-23	N 14°28'35"W	8.97'
B-24	N 16°08'59"W	71.14'
B-25	S 83°53'59"E	68.69'
B-26	N 72°28'52"E	68.71' TOTAL
B-27	S 83°53'59"E	53.42'
B-28	S 8°33'59"E	50.82'
B-29	S 8°08'59"E	39.42'
B-30	S 5°24'51"E	28.96'
B-31	S 89°36'52"W	50.19'
B-32	S 2°24'51"E	50.19'
B-33	S 89°36'52"W	109.11'
B-34	N 3°32'23"W	15.00' TOTAL

SEWAGE TIES

Code	Bearing	Distance
S-1	S 3°11'11"W	112.6'
S-2	S 33°49'W	171.7'
S-3	S 7°57'W	92.9'
S-4	S 43°08'W	160.4'
S-5	S 68°27'E	180.6'
S-6	N 75°28'E	100.0'
S-7	N 45°59'E	68.6'
S-8	S 77°39'E	90.4'
S-9	S 69°51'E	101.6'
S-10	N 86°49'W	228.3'
S-11	S 37°30'E	100.0'
S-12	S 86°11'W	268.2'

CURVE DATA

Code	Central Angle	Radius	Arc	Chord Bearing	Dist.
C-1	4°56'30"	2549.16'	219.86'	S 6°05'44"E	219.80'
C-2	7°35'47"	789.21'	104.04'	S 12°32'15"E	103.96'
C-3	4°56'30"	2532.66'	218.44'	S 6°05'44"E	218.37'
C-4	7°34'06"	806.41'	106.52'	S 12°31'06"E	106.44'
C-5	11°13'05"	622.27'	121.84'	N 10°32'28"W	121.64'
C-6	38°39'58"	813.35'	548.89'	N 53°08'52"E	538.53'
C-7	11°13'05"	672.27'	131.63'	S 10°32'28"E	131.41'

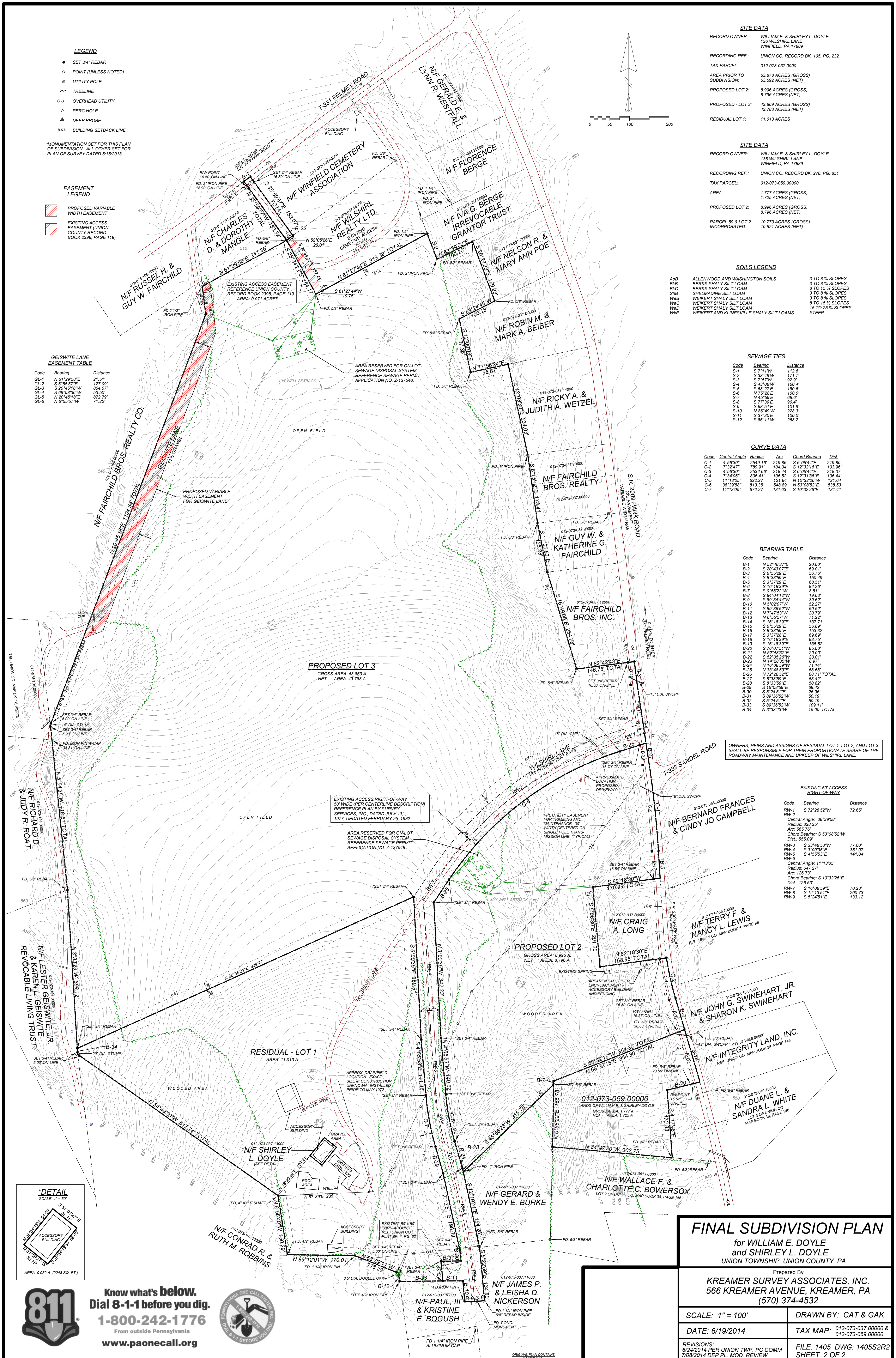
BEARING TABLE

Code	Bearing	Distance
RW-1	S 72°28'52"W	72.65'
RW-2	Central Angle: 38°39'58"	
RW-2	Radius: 838.35'	
RW-2	Arc: 565.76'	
RW-2	Chord Bearing: S 53°08'52"W	
RW-2	Dist.: 555.09'	
RW-3	S 33°48'53"W	77.00'
RW-4	S 3°00'35"E	351.07'
RW-5	S 4°55'53"E	141.04'
RW-6	Central Angle: 11°13'05"	
RW-6	Radius: 647.27'	
RW-6	Arc: 126.53'	
RW-6	Chord Bearing: S 10°32'28"E	
RW-6	Dist.: 126.53'	
RW-7	S 16°08'59"E	70.28'
RW-8	S 12°13'51"E	200.73'
RW-9	S 5°24'51"E	133.12'

EXISTING 50' ACCESS RIGHT-OF-WAY

Code	Bearing	Distance
RW-1	S 72°28'52"W	72.65'
RW-2	Central Angle: 38°39'58"	
RW-2	Radius: 838.35'	
RW-2	Arc: 565.76'	
RW-2	Chord Bearing: S 53°08'52"W	
RW-2	Dist.: 555.09'	
RW-3	S 33°48'53"W	77.00'
RW-4	S 3°00'35"E	351.07'
RW-5	S 4°55'53"E	141.04'
RW-6	Central Angle: 11°13'05"	
RW-6	Radius: 647.27'	
RW-6	Arc: 126.53'	
RW-6	Chord Bearing: S 10°32'28"E	
RW-6	Dist.: 126.53'	
RW-7	S 16°08'59"E	70.28'
RW-8	S 12°13'51"E	200.73'
RW-9	S 5°24'51"E	133.12'

OWNERS, HEIRS AND ASSIGNS OF RESIDUAL LOT 1, LOT 2, AND LOT 3 SHALL BE RESPONSIBLE FOR THEIR PROPORTIONATE SHARE OF THE ROADWAY MAINTENANCE AND UPKEEP OF WILSHIRL LANE.



FINAL SUBDIVISION PLAN
for WILLIAM E. DOYLE and SHIRLEY L. DOYLE
UNION TOWNSHIP UNION COUNTY PA

Prepared By
KREAMER SURVEY ASSOCIATES, INC.
566 KREAMER AVENUE, KREAMER, PA
(570) 374-4532

SCALE: 1" = 100'	DRAWN BY: CAT & GAK
DATE: 6/19/2014	TAX MAP: 012-073-037.00000 & 012-073-059.00000
REVISIONS: 6/24/2014 PER UNION TWP. PC COMM 7/8/2014 DEP. PL. MOD. REVIEW	FILE: 1405 DWG: 1405S2R2 SHEET 2 OF 2



Know what's below.
Dial 8-1-1 before you dig.
1-800-242-1776
From outside Pennsylvania
www.paonecall.org



ORIGINAL PLAN CONTAINS
DATE: 6/19/2014